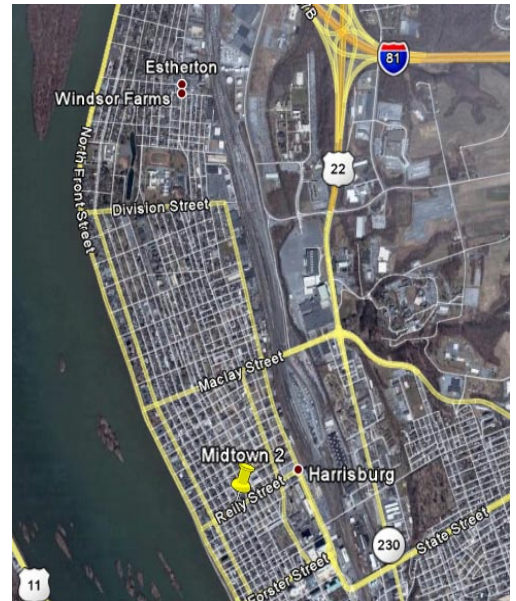


## DIRECTIONS TO MIDTOWN 2

**FROM I-81 North or South:** Follow **I-81** to the Front Street **Exit 66**. Go **South** on **Front Street** for approximately 3 miles. Turn **Left** onto **Reily Street**. Turn **Left** onto **Third Street**. **Parking lot** is on the **right**.

**FROM I-83 South:** Follow **I-83** to Harrisburg. Take **Exit 43** toward Second Street/State Capitol. Make **slight left** at **South Second Street**. Follow Second Street for approximately 1.4 miles. Turn **Right** onto **Reily Street**. Turn **Left** onto **Third Street**. **Parking lot** is on the **right**.

**FROM THE NORTH:** Take **Route 11-15 South** to **I-81**. Follow **I-81 North** crossing the Susquehanna River to the Front Street **Exit 66**. Go **South** on **Front Street** for approximately 3 miles. Turn **Left** onto **Reily Street**. Turn **Left** onto **Third Street**. **Parking lot** is on the **right**.



**FROM LANCASTER:** Take **I-283 North** toward Harrisburg to **I-83 South**. Take **Exit 43** toward Second Street/State Capitol. Make **slight left** at **South Second Street**. Follow Second Street for approximately 1.4 miles. Turn **Right** onto **Reily Street**. Turn **Left** onto **Third Street**. **Parking lot** is on the **right**.

**FROM YORK:** Take **I-83 North** across the Susquehanna River to Harrisburg. Take **Exit 43** toward Second Street/State Capitol. Make **slight left** at **South Second Street**. Follow Second Street for approximately 1.4 miles. Turn **Right** onto **Reily Street**. Turn **Left** onto **Third Street**. **Parking lot** is on the **right**.

**FROM THE PENNSYLVANIA TURNPIKE:** Traveling **West** on the Turnpike, take **Exit 247**. Merge onto **I-283 North**. Take **Exit 3A** on the **Left** to merge onto **I-83 South** toward Harrisburg. Take **Exit 43** toward Second Street/State Capitol. Make **slight left** at **South Second Street**. Follow Second Street for approximately 1.4 miles. Turn **Right** onto **Reily Street**. Turn **Left** onto **Third Street**. **Parking lot** is on the **right**.

Traveling **East** on the Turnpike, take **Exit 236**. Follow **Route 15 North** toward Camp Hill/Harrisburg. Follow the **Harvey Taylor Bridge Bypass** toward Harrisburg/Harvey Taylor Bridge. Crossing the

Susquehanna River, **continue straight** onto Forster Street. Turn **Left** onto **North Second Street**. Turn **Right** onto **Reily Street**. Turn **Left** onto **Third Street**. **Parking lot** is on the **right**



**IF YOU NEED ASSISTANCE, CALL DONNA DAVERSA (717-221-1300, x1421).**